

We drive
polymer
distribution.
Easy, smart,
passionate.



Product	Description
Ultradur®	PBT, PBT Blends
Ultradur® BMBcert	Bio mass balanced PBT, PBT Blends
Ultraform®	POM
Ultraform® BMBcert	Bio mass balanced POM
Ultramid® A, B, C, T, Balance	PA66, 6, 6/66, 6/6T, 6.10
Ultramid® Advanced, ONE J	PPA
Ultramid® BMBcert	Bio mass balanced PA
Ultramid® Deep Gloss	PA for high-gloss automotive interiors
Ultramid® Endure	PA66
Ultramid® Extrusion	PA6, 66, 6/66 extrusion
Ultramid® Structure	Long glass fibre PA
Ultramid® Vision	Semi-transparent PA
Ultrason® E	PESU
Ultrason® P	PPSU
Ultrason® S	PSU
Apec®	PC-HT
Apec® RE	Sustainable PC-HT with attributed bio-circular content, ISCC PLUS certified
Bayblend®	PC+ABS, ABS+PC, PC-ASA-Blend, PC+SAN
Bayblend® RE	Sustainable PC+ABS with attributed bio-circular content, ISCC PLUS certified
Makroblend®	PC+PBT, PC+PCT-G, PC+PET, PBT+PC, PET+PC
Makroblend® RE	Sustainable PC+PET with attributed bio-circular content, ISCC PLUS certified
Makrolon®	PC
Markolon®	PC for lighting applications
Markolon® RE	Sustainable PC with attributed bio-circular content, ISCC PLUS certified
Desmopan®	TPU
Desmopan® CQ EC	TPU bio-based solutions
Desmopan® CQ MBC	TPU bio-circular / mass-balancing solutions
Desmopan® CQ RC	TPU recycling solutions
Texin®	TPU



Product	Description
Durethan® A, B	PA66, PA6
Durethan® Blue	PA6
Pocan®	PBT, PBT Blends
Clearlux®	MABS
K-Resin®	SBC
Luran®	SAN
Luran® ECO	Bio attributed SAN
Luran® S / Luran® S/C	ASA, ASA+PC
Luran® S ECO	Bio attributed ASA
Lustran®	ABS (low glow)
Lustran® Standard	Mass ABS
NAS® / Zylar®	SMMA+MBS
NAS® ECO	Bio attributed NAS
Novodur®	ABS
Novodur® ECO	Bio attributed ABS / mechanically recycled ABS
Novodur® HD	ABS (healthcare)
Novodur® HH	ABS (high heat)
Novodur® HH ECO	Mechanically recycled ABS (high heat)
Styroflex®	SBC thermoplastic elastomer
Styroflex® ECO	Bio attributed SBC
Styrolution® PS	PS-GP, PS-HI
Styrolution® PS ECO	Bio attributed PS-GP, PS-HI
Styrolux®	SBC
Styrolux® ECO	Bio attributed SBC
Terblend® N	ABS+PA
Terblend® S	ASA+PA
Terluran®	ABS
Terluran® ECO	Bio attributed ABS / mechanically recycled ABS
Terlux®	MABS
Terlux® HD	MABS (healthcare)



Product	Description
Adflex™	PP-Catalloy
Adstif™	PP (Homo, Copo) high stiffness
Adsyl™	PP-Catalloy
CirculenRecover	PE & PP based on mechanically recycled pre and post-consumer waste
CirulenRenew	PE & PP based on renewable raw materials, certified mass balance
CirulenRenew Plus	PE & PP based on renewable raw materials, certified C14 content
CirculenRevive*	PE & PP based on advanced molecular recycling technology
Clyrell™	PP (Copo, Raco) impact resistant
Hifax™ (non-coloured)	PE-Catalloy
Hiflex™	PE-Catalloy
Histif™	PE-HD
Hostalen™ (non-coloured)	PE-HD
Hostalen™ PP	PP (Homo, Copo, Raco)
Koattro™	Polybutene (PB-1)
Lucalen™	PE Copolymer
Luflexen™	PE-LLD
Lupolen™	PE-LD, PE-MD, PE-HD
Moplen™	PP (Homo, Copo, Raco)
Petrothene™	PE-HD based compound
Purell™	PB-1, PE, PP (healthcare)
Softell™ (non-coloured)	PP-Catalloy
Toppyl™	Polybutene (PB-1)

* not yet commercially available



ECOTRIA® R	Thermoplastic copolyester with a share of mechanically recycled PCR content
ECOTRIA® CR	Thermoplastic copolyester with a share of chemically recycled polymer content
ECOZEN® (series: T, Claro)	Bio-modified copolyester
SKYGREEN®	Copolyester PETG and PCTG grades
SKYPET®	PETg
SKYPET® CR	Chemically recycled PCR PET
SKYPLETE® (series: E, G, L)	Product range for 3D-printing
SKYPURA®	High temperature and high performance polyester PCT
SKYTRA®	Reinforced and flame retardant PET



Amodel®	PPA
Amodel® Bios	Partially bio-based PPA
Ixef® HC/GS	PARA
Kalix® /Omnix®	HPPA
Xydar®	LCP



Product	Description
Alcolor®	Color masterbatches ABS, SAN, PC, PC+ABS, PA6, PA66, PBT, PET, POM, etc.
Alcom®	Customer specific compound solutions based on various polymers
Alcom® 3D	Applicable for production of filaments for Fused Deposition Modeling (FDM)
Alcom® CFX	Colour effects
Alcom® DET	Detectable
Alcom® HM	Hygienic material - durable antibacterial protection of plastic surface according ISO 22196:2011
Alcom® LB	Light blocking and high reflection
Alcom® LD/LDDC/LG/LIR	Light diffusion/Light diffusion deep colour/Light guiding/Light infrared
Alcom® MED	Medical, pharmaceutical and diagnostic applications
Alcom® MS	Modified surfaces
Alcom® TC	Thermally conductive
Alcom® WP	Wear protect
Alfater XL®	PP+EPDM TPV
Alfater XL® ECO	Sustainable solutions based on PP+EPDM TPV
Alperform®	Additive masterbatches ABS, SAN, PC, PC+ABS, PA6, PA66, PBT, PET, POM, PE, PP, TPU, etc.
Altech®	PA6, PA66, PP, PS, ABS, PC, PC+ABS, SAN, PBT, PE, etc.
Altech® ECO	Sustainable solutions Near-to-Prime based on PA6, PA66, PC, PC+ABS, PP
Altech® ECO / IQ	PP/PA6/PA66 recycled compounds
Altech® IQ	Sustainable solutions based on PA6, PA66, PP
Altech NXT PP®	PP
Cellidor®	CP, CAB
Tedur®	Linear PPS
WIC	Carbon fibre reinforced PP, PA6, PA66
WIPAFLEX	PP/PE/EPDM mineral filled recycled compounds
WIPELAST	PP/EPDM mineral filled recycled compounds

Product**Description**

Ultramid® S

PA6.10

Evoprene®

TPS

Masterbatches for Polyolefins

Black-Masterbatch
White-Masterbatch
Additive-Masterbatch
Colour-Masterbatch

Beki-Shield®

Steel fiber batch

VESTAKEEP®

PEEK

Inoflar™

PVDF

ECOTRAN®

Chlorine free PPS compounds

Post-Consumer Recycled Plastics (PCR)

ABS, HDPE, PP, PS

Post-Consumer Recycled Plastics (PCR)

ABS, PS, PP, PC+ABS

Luranyl®

PPE+PS, PPE+PA

Sipolprene®

TPC

Sipolprene® S

Sustainable TPC

Technipol® Bio

PBS, PBAT, PBSeb

Arboblend®

Biopolymers with natural additives and natural fibres

Arbofill®

Combination of plastics and natural materials

Arboform®

Lignin based polymers with natural fibres

Solplast®

TPS

Vampalloy®

PC+ABS FR, PA+PPS FR

Vampamid®

PA6 FR, PA66 FR

Vampcarb®

PC FR

Vamplen®

PP FR

Vamporan®

PPE FR

Vampsab®

ABS FR

Vampson®

PPS FR

Vampstyr®

PS FR

Vampsulf®

PSU FR

Vampter®

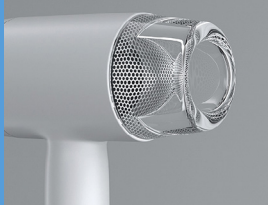
PBT FR, PC+PBT FR

The best solution for your industry



Building & Construction

- Exterior and aesthetic interior spaces for functional design
- Antibacterial protection in sanitary facilities according to ISO 22196
- High understanding of the building and construction industry regulations



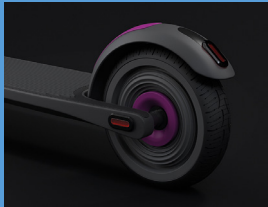
Electrical & Electronics

- Light- and lighting technology:
 - Reflectors, diffusing discs, light guides, housings
 - Optics and lenses
 - Operating elements and displays
- EMI and ESD shielding elements
- Thermal conductive and flame retardant solutions for housings of electronics
- Components and housings for household appliances



Healthcare

- Medical grade plastics according to VDI guideline 2017 MGP
- Polymers for medical devices, invitro diagnostics and pharmaceutical packaging as well as biopharma applications and laboratory equipment
- Customised compound solutions
- Support in regulatory questions



Mobility

- Applications in e-mobility, railway and other transport systems
- Components for lighting systems
- Thermal management of components
- Lightweight applications (under the hood, vehicle interior)
- Aesthetical and structural parts
- Bellows and air ducts



Packaging

- High expertise in cosmetic packaging
- Active and sustainable packaging concepts in food applications
- Bag in box systems and caps and closures
- Extended shelf life food packaging



Sports & Leisure

- Huge array of high performance polymers for protective or lightweight design
- Solutions for protective gear, bikes, scooters etc.
- General outdoor equipment for every usage in an increasing array of sporting and leisure activities



Sustainable Solutions

- Comprehensive portfolio for solutions on reduction of CO₂ footprint in plastic applications e.g. for automotive, packaging and E & E
- Bio based plastics, made by renewable raw material or by mechanical or chemical recycled material
- Closed loop solutions for supporting circular economy

ALBIS worldwide

Austria · China · Czech Republic · France ·
Germany (Berlin, Düsseldorf, Hamburg,
Nürnberg, Stuttgart) · Hungary · Italy ·
Malaysia · Morocco · Netherlands · Poland ·
Romania · Spain · Sweden · Switzerland ·
Tunisia · Turkey · UK · Vietnam

Contact us

ALBIS Plastic Vertriebsgesellschaft m.b.H.
Am Euro Platz 2 Building G / Stairs 2 / 1st floor
AT-1120 Vienna
Austria
T +43 1 3567788-0
F +43 1 3567788-99
albis-at@albis.com
albis.com

Head Office

ALBIS Distribution GmbH & Co. KG
Mühlenhagen 35
20539 Hamburg
Germany
T +49 40 78105 0
info@albis.com
albis.com

Visit us on LinkedIn:

